

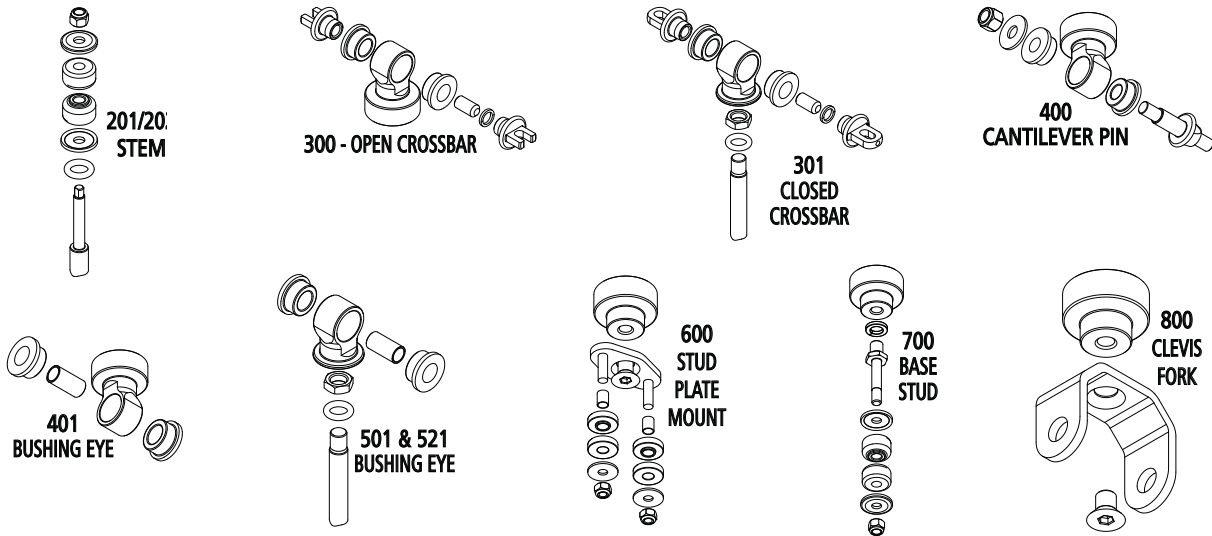
Bolt-In QuickSet 1 & 2

VariShock Bolt-In Size Chart

QuickSet 1	QuickSet 2	Ride Height	Compressed Length	Extended Length	Shock Travel	Upper Mount Type	Mount Code	Lower Mount Type	Mount Code
VAS 14122-615	VAS 14222-615	15.02	11.94	18.09	6.15	Eye 7/16 to 1/2	501	Eye 7/16 to 1/2	501
VAS 14128-425	VAS 14228-425	12.17	10.04	14.29	4.25	Eye 7/16 to 1/2	501	Eye 1/2 to 11/16	521
VAS 14144-715	VAS 14244-715	14.40	10.83	17.98	7.15	Stem 3/8	201	Stem 3/8	700
VAS 14145-425	VAS 14245-425	10.43	8.30	12.55	4.25	Stem 3/8	201	Crossbar open	300
VAS 14145-515	VAS 14245-515	11.78	9.20	14.35	5.15	Stem 3/8	201	Crossbar open	300
VAS 14145-615	VAS 14245-615	13.28	10.20	16.35	6.15	Stem 3/8	201	Crossbar open	300
VAS 14146-515	VAS 14246-515	11.78	9.20	14.35	5.15	Stem 3/8	201	Crossbar closed	301
VAS 14146-615	VAS 14246-615	13.28	10.20	16.35	6.15	Stem 3/8	201	Crossbar closed	301
VAS 14147-425	VAS 14247-425	9.96	7.84	12.09	4.25	Stem 3/8	201	Stud plate	600
VAS 14147-515	VAS 14247-515	11.31	8.74	13.89	5.15	Stem 3/8	201	Stud plate	600
VAS 14147-615	VAS 14247-615	12.81	9.74	15.89	6.15	Stem 3/8	201	Stud plate	600
VAS 14149-715	VAS 14249-715	14.78	11.20	18.35	7.15	Stem 3/8	201	Cantilever Pin / Bushing Eye	400/401
VAS 14149-825	VAS 14249-825	16.43	12.30	20.55	8.25	Stem 3/8	201	Cantilever Pin / Bushing Eye	400/401
VAS 1414C-515	VAS 1424C-515	13.06	10.49	15.64	5.15	Stem 3/8	201	Clevis Fork	800
VAS 14164-715	VAS 14264-715	16.14	12.57	19.72	7.15	Crossbar closed	301	Stem 3/8	700
VAS 14167-425	VAS 14267-425	11.70	9.58	13.83	4.25	Crossbar closed	301	Stud plate	600
VAS 14169-715	VAS 14269-715	16.52	12.94	20.09	7.15	Crossbar closed	301	Cantilever Pin 1/2	400
VAS 14188-425	VAS 14288-425	12.17	10.04	14.29	4.25	Eye 1/2 to 11/16	521	Eye 1/2 to 11/16	521
VAS 14188-715	VAS 14288-715	16.52	12.94	20.09	7.15	Eye 1/2 to 11/16	521	Eye 1/2 to 11/16	521
VAS 14188-825	VAS 14288-825	18.17	14.04	22.29	8.25	Eye 1/2 to 11/16	521	Eye 1/2 to 11/16	521

Note: Sold only in pairs

Fitment: Bolt-In front shocks are larger in diameter than the hole in the lower A-arm. The lower A-arm must be disconnected from the spindle to allow installation of the shock into the front coil spring.



Mount Codes: These codes define the style and range of mountings that attach the individual model numbers

201	Upper 3/8 thread stem x 2-1/8 long	400/401	Cantilever pin 1/2 thread with 1-5/16 offset	521	12mm bolt x 1-1/4, 1-1/2, 1-5/8 sleeve width
300	Open crossbars for 2-1/8 to 2-1/2 bolt centers		7/16 bolt x 1-1/4, 1-3/8, 3-3/8 sleeve width		1/2 bolt x 1-1/4, 1-3/8, 1-5/8 sleeve width
	7/16 bolt x 1-1/4, 1-3/8, 3-3/8 sleeve width		12mm bolt x 1-1/4, 1-1/2, 1-5/8 sleeve width		9/16 bolt with 1-5/8 sleeve width
	12mm bolt x 1-1/4, 1-1/2, 1-5/8 sleeve width		1/2 bolt x 1-1/4, 1-3/8, 1-5/8 sleeve width		5/8 bolt with 1-5/16 sleeve width
	1/2 bolt x 1-1/4, 1-3/8, 1-5/8 sleeve width	501	7/16 bolt x 1-1/4, 1-3/8, 3-3/8 sleeve width		11/16 bolt with 1-9/16 sleeve width
301	Closed crossbars for 2-3/8 to 3" bolt centers		12mm bolt x 1-1/4, 1-1/2, 1-5/8 sleeve width	600	5/16 stud plates on 2-1/8 centers
	5/8 bolt x 1-1/4 sleeve width		1/2 bolt x 1-1/4, 1-3/8, 1-5/8 sleeve width	700	Lower 3/8 thread stem x 2-1/8 long
				800	Clevis fork with 5/8 bore x 2-3/4 wide

All prices subject to change. Current pricing available at www.cachassisworks.com.



A Chris Alston's Chassisworks, Inc. Brand

Chris Alston's Chassisworks, Inc.

8661 Younger Creek Dr., Sacramento CA 95828 Tel: 916-388-0288 Fax: 916-388-0295

Toll Free: 800-722-2269 www.varishock.com Email: VariShock@cachassisworks.com