

INSTALLATION GUIDE



7055-F1

Front Struts for 1967-69 Camaro and Firebird



Description: Tubular forward struts with Gemini-connector attachment to factory or aftermarket subframes. Includes bolt-on firewall mounts, strut tubes, and Gemini connector assemblies. Trimming and welding required to achieve best fit.

PARTS LIST

7055-F1-X – Front Struts

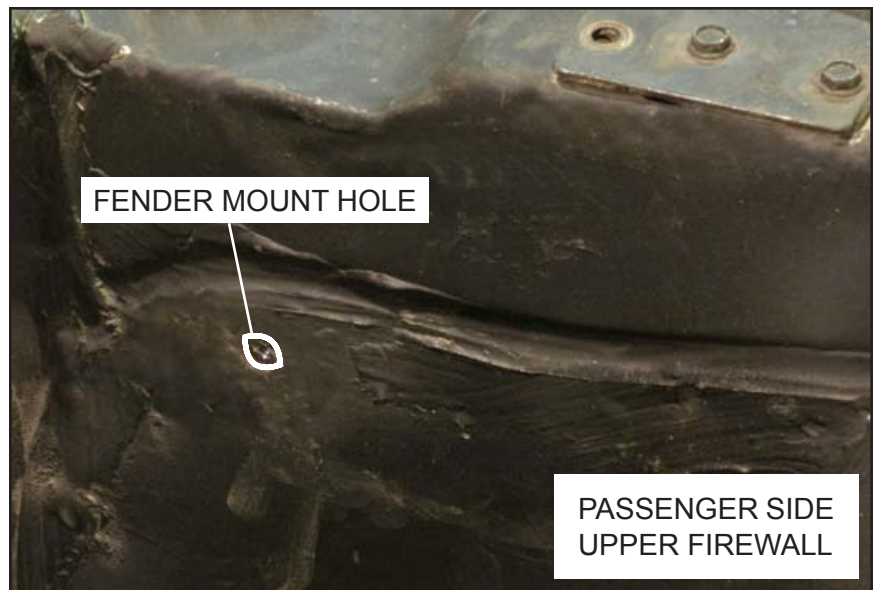
Qty	Part Number	Description
1	300-3003	Hardware box
1	4870-08-X	Front strut, '67-69 Camaro, driver side
1	4870-09-X	Front strut, '67-69 Camaro, passenger side

300-3003 - Hardware Box

2	1146	Gemini connector, plug
2	1151	Gemini connector, receiver
1	230198	Firewall plate, '67-69 Camaro, driver side
1	230199	Firewall plate, '67-69 Camaro, passenger side
6	3101-038-24C	Locknut 3/8-24 nylon insert
4	3103-031F1.25C	Socket head allen 5/16-24 x 1-1/4"
6	3104-038F1.00C	Button head 3/8-24 x 1"
4	3108-031H-S	High collar lockwasher 5/16"
6	3157-038S-C	Washer 3/8" SAE flat

INSTRUCTIONS

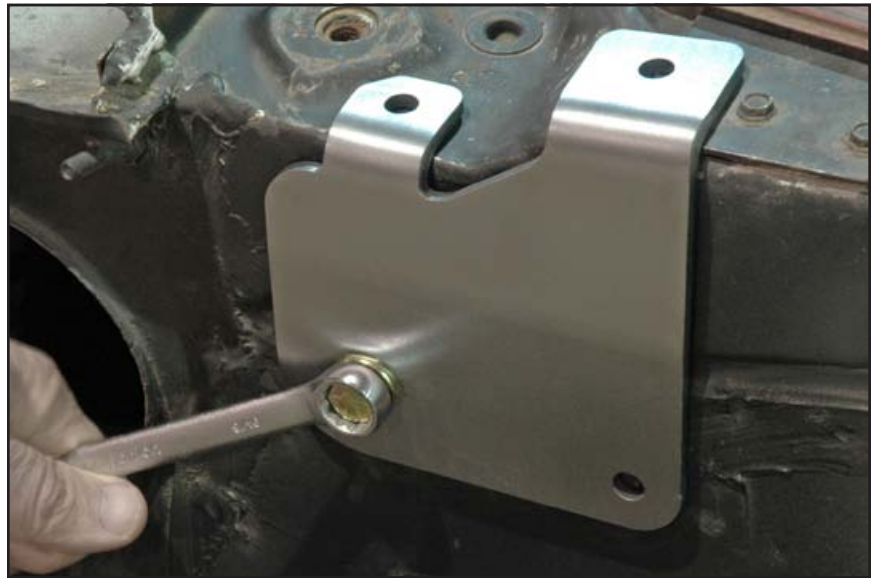
1. Line up the oval hole in the firewall bracket with the firewall's fender mount hole.



2. Thread a 3/8-16 bolt through the bracket and bolt it to the firewall.



3. The bracket should be seated at the upper tabs and along the face of the firewall.



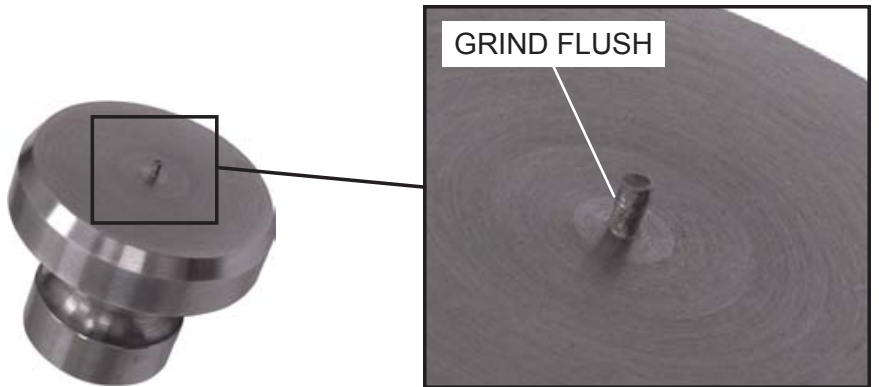
4. Using the bracket as a guide drill the three holes in the firewall with a 3/8" diameter drill bit. The two upper holes will go into the air vent box. The one on the face of the firewall goes through to the inside of the car.



5. Secure the bracket to the firewall with the three 3/8-24 x 1" button head bolts, flat washers, and locknuts.



6. The alignment pin on the base of the joint plug is not used in this application and must be ground flush.



7. Set the joint receiver over the joint plug and secure with the 5/16-24 x 1-1/4" socket head cap screws and high-collar lockwashers.



8. Insert the joint receiver into the front of the forward strut.



9. Position the strut assembly on the subframe and against the firewall plate as shown. The strut tube is purposely oversized so it can be trimmed to fit as needed. Adjustments to the length, angle, and height can be made by trimming the ends.



10. Once you have determined the location of the strut assembly on the subframe, use a disc sander with a scotch-brite pad to expose bare metal before welding.



11. Tack weld the joint plug base to the subframe.



12. Tack weld the strut tube to the firewall plate.
13. Double check for proper clearance around the inner fender, headers, and hood hinge. Make any necessary adjustments.
14. Fully weld the strut assembly to the subframe and the firewall bracket.



NOTES:

WARRANTY NOTICE:

There are NO WARRANTIES, either expressed or implied. Neither the seller nor manufacturer will be liable for any loss, damage or injury, direct or indirect, arising from the use or inability to determine the appropriate use of any products. Before any attempt at installation, all drawings and/or instruction sheets should be completely reviewed to determine the suitability of the product for its intended use. In this connection, the user assumes all responsibility and risk. We reserve the right to change specification without notice. Further, Chris Alston's Chassisworks, Inc., makes **NO GUARANTEE** in reference to any specific class legality of any component. **ALL PRODUCTS ARE INTENDED FOR RACING AND OFF-ROAD USE AND MAY NOT BE LEGALLY USED ON THE HIGHWAY.** The products offered for sale are true race-car components and, in all cases, require some fabrication skill. **NO PRODUCT OR SERVICE IS DESIGNED OR INTENDED TO PREVENT INJURY OR DEATH.**

Chris Alston's Chassisworks
8661 Younger Creek Drive
Sacramento, CA 95828
Phone: 916-388-0288
Technical Support: sales@cachassisworks.com

