

READ ALL INSTRUCTIONS COMPLETELY AND THOROUGHLY UNDERSTAND THEM BEFORE DOING ANYTHING.  
CALL CHASSISWORKS TECH SUPPORT (916) 388-0288 IF YOU NEED ASSISTANCE.

## INSTALLATION GUIDE



### 5914-A20

#### Billet Engine Mount Adapter Set 1968-1972 Chevelle (GM A-Body)



#### Description:

Motor mount adapters for use with stock frames of 1968-1972 Chevelle. Enables direct bolt-on installation of Chassisworks billet motor mounts (6007-X, 6055-X) with stock frames.

# PARTS LIST

Qty	Part Number	Description
1	300-3305	Chassis engine adapters A20 for billet side mounts
1pr	3046	Side motor mount spuds .50 x 2.77 for 2 mounts (optional)

**You will also have one of the billet engine mount sets below:**

1pr	6007-0	Billet mount bare machine finish LS-1 Chevy V8 fits LS-1 thru LS-4 & others
1pr	6007-1	Billet mount satin anodized LS-1 Chevy V8 fits LS-1 thru LS-4 & others
1pr	6007-2	Billet mount polished LS-1 Chevy V8 fits LS-1 thru LS-4 & others
1pr	6055-0	Billet mounts bare machine finish V8 Chevy fits all small & big block Chevy engines
1pr	6055-1	Billet mounts satin anodized V8 Chevy fits all small & big block Chevy engines
1pr	6055-2	Billet mounts polished V8 Chevy fits all small & big block Chevy engines

## 300-3305 - Engine-Mount Adapters

Qty	Part Number	Description
1	7960-0005	Motor mount adapter, driver side with round mounting hole
1	7960-0006	Motor mount adapter, passenger side with slotted mounting hole
1	7952-5914A20	Hardware bag 5914-A20 billet engine mount chassis adapters

## 7952-5914A20 - Hardware Bag

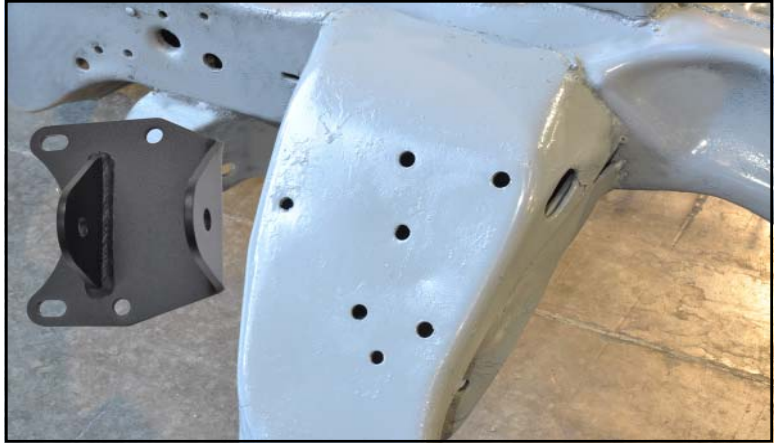
8	3101-038-16C	Locknut 3/8-16 nylon insert
8	3103-038C1.25C	Socket head 3/8-16 x 1-1/4" cap screw
16	3157-038S-C	Washer flat 3/8" SAE plated

# INSTRUCTIONS

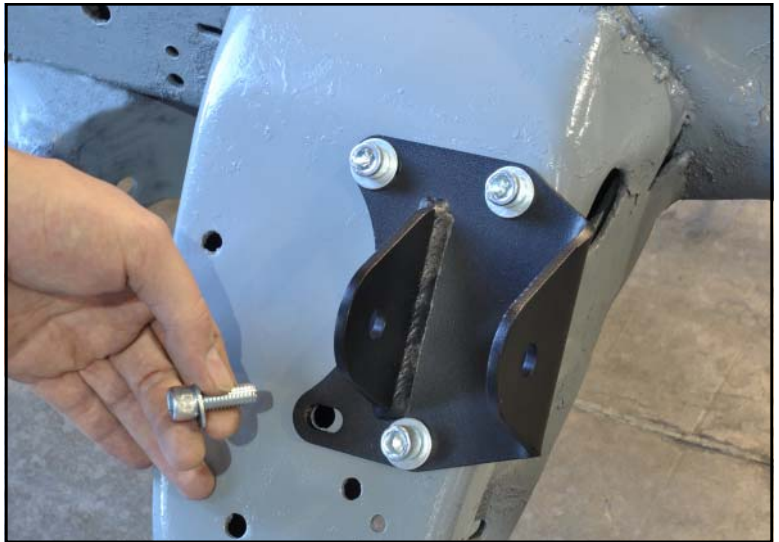
1. Unbolt the stock motor-mount stand from the driver side. The nuts can be accessed with a deep well socket and extension from the bottom side of the subframe crossmember.



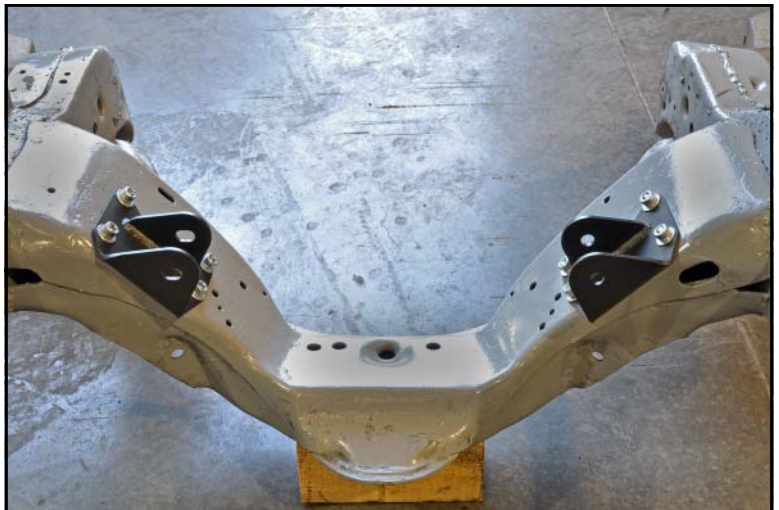
2. The new billet motor mount adapters will use the factory holes in the subframe. The driver-side adapter has the round hole for the billet mount. The passenger side adapter has a slotted hole.



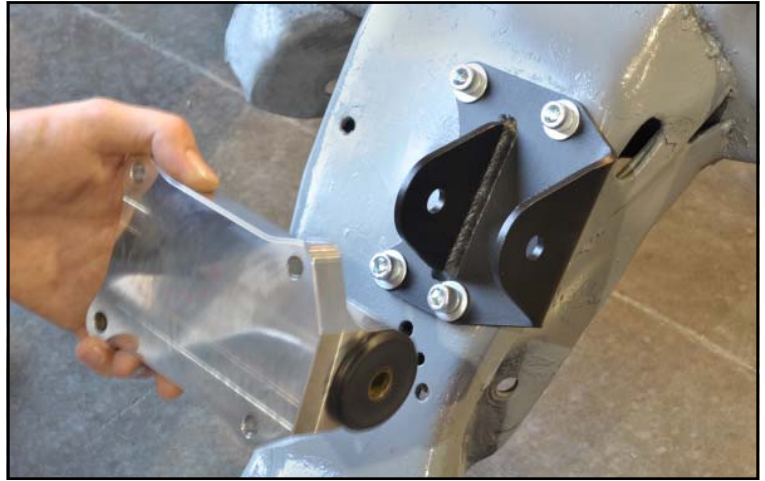
3. Bolt the driver side billet motor plate adapter to the subframe with the 3/8-16 x 1-1/4" socket-head cap screws, flat washers and locknuts supplied. Place a flat washer under the head of the cap screw and before the locknut. Tighten all fasteners and torque to 25 lb-ft.



4. Repeat this procedure for the passenger side.



5. Once the billet motor mounts are attached to the engine they will slide into the adapters and be secured with the 1/2" hardware included with the mounts. Shown is the LS style billet mount.



**WARRANTY NOTICE:**

There are NO WARRANTIES, either expressed or implied. Neither the seller nor manufacturer will be liable for any loss, damage or injury, direct or indirect, arising from the use or inability to determine the appropriate use of any products. Before any attempt at installation, all drawings and/or instruction sheets should be completely reviewed to determine the suitability of the product for its intended use. In this connection, the user assumes all responsibility and risk. We reserve the right to change specification without notice. Further, Chris Alston's Chassisworks, Inc., makes **NO GUARANTEE** in reference to any specific class legality of any component. **ALL PRODUCTS ARE INTENDED FOR RACING AND OFF-ROAD USE AND MAY NOT BE LEGALLY USED ON THE HIGHWAY.** The products offered for sale are true race-car components and, in all cases, require some fabrication skill. **NO PRODUCT OR SERVICE IS DESIGNED OR INTENDED TO PREVENT INJURY OR DEATH.**

Chris Alston's Chassisworks  
8661 Younger Creek Drive  
Sacramento, CA 95828  
Phone: 916-388-0288  
Technical Support:tech@cachassisworks.com

