

**Billet-Aluminum Improved Geometry Tall Spindles
for GM A-, F-, and X-Body Vehicles 1964-72**



*Improve Handling and Reduce Weight
with this Easy Bolt-on!*



Applications:

A-Body 1964-72 - Chevelle, Cutlass,
El Camino, GTO, Lemans, Skylark

F-Body 1967-69 - Camaro & Firebird

X-Body 1968-72 - Nova

The Chassisworks billet-aluminum spindles and steering arms are direct-replacement components for popular GM A-, F-, and X-body muscle cars from 1964 to 1972. While maintaining compatibility with the factory lower control arm, and most aftermarket control arms and brakes, improvements to the spindle geometry are incorporated. Chassisworks used the latest analysis software to develop a superior to steel spindle, that is much more rigid and lighter weight. The resulting increase in suspension geometry control is substantial.

Not limiting you to a particular vehicle stance, Chassisworks manufactures 2"-drop and stock-height uprights. Overall height of both upright versions is 1-1/2" taller than stock, resulting in more aggressive camber gain with increased cornering ability. Chassisworks offers two versions of lightweight billet-aluminum steering arms; bumpsteer-corrected for the A-body platform and Z28 quick-ratio for F- and X-Body platforms. Spindles and steering arms feature a sleek black-anodized finish. Heat treated, corrosion resistant, slotted flange nuts are included, 1/2-20 for upper and 9/16-18 for lower balljoints, with optional 5/8-18 for oversize stud lower balljoints.

Note: Taller spindle height requires Chassisworks billet steering arms and aftermarket upper A-arm to properly position balljoint range of misalignment.

Features/Benefits:

- Lightweight billet-aluminum upright with stainless-steel tapered balljoint inserts
- One-half the weight of tall steel spindles
- FEA designed; more rigid than steel spindles
- Direct replacement for OEM spindles
- Accepts OEM or aftermarket brakes
- 2" drop or stock height
- 1-1/2" taller upright improves handling
- Bumpsteer corrected steering arm (A-body)
- Z28 quick-ratio steering arm (F- and X-Body)

Uprights



2" Drop Spindle Pin

Part Number: 5754-AFX-2

Applications:

- **1964-72 Chevelle (A-Body)**
Also Cutlass, El Camino, F85, GTO, Lemans, Skylark
- **1967-69 Camaro (F-Body)**
Also Firebird
- **1968-72 Nova (X-Body)**

Note: Minimum rim size is 15 to 18" diameter, depending upon width and brake kit.



Stock Height Spindle Pin

Part Number: 5754-AFX-0

Applications:

- **1964-72 Chevelle (A-Body)**
Also Cutlass, El Camino, F85, GTO, Lemans, Skylark
- **1967-69 Camaro (F-Body)**
Also Firebird
- **1968-72 Nova (X-Body)**

Note: Minimum rim size is 15 to 18" diameter, depending upon width and brake kit.

Steering Arms



A-Body (Bumpsteer Corrected)

Part Number: 5755-A10-BSI

Applications:

1964-72 Chevelle (A-Body)
Also Cutlass, El Camino, F85, GTO, Lemans, Skylark

Note: Uses OEM compatible outer tie rod or Chassisworks bumpsteer tie rod (5715-AXX).



F-Body and X-Body (Z28 Quick Ratio)

Part Number: 5755-F10-Z28

Applications:

1967-69 Camaro (F-Body)
Also Firebird

1968-72 Nova (X-Body)

Note: Uses OEM compatible outer tie rod or Chassisworks bumpsteer tie rod (5715-FXX).

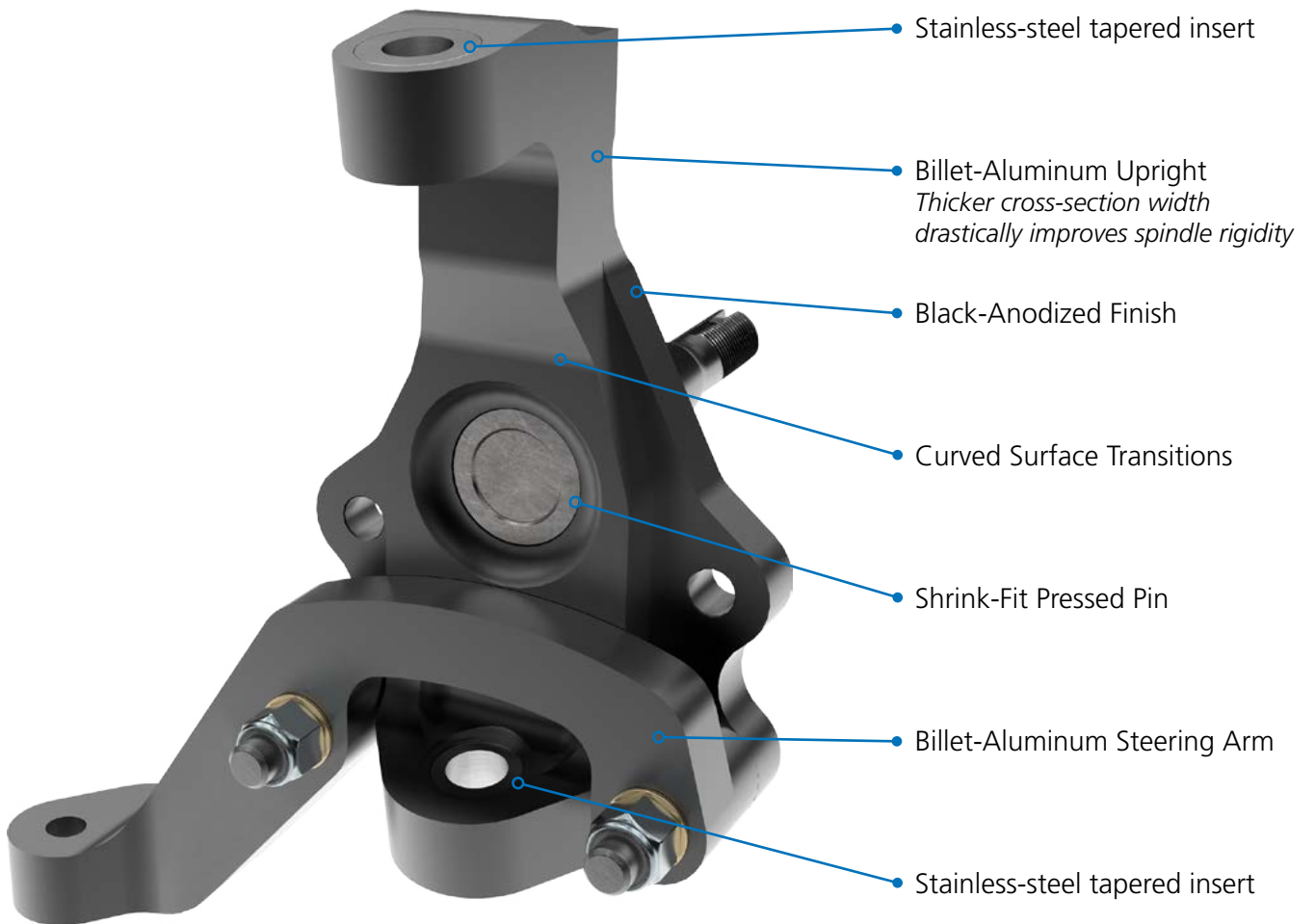
Spindles with Brakes



Stock height spindle for Chevelle



2-dropped spindle for Camaro/Firebird



Brakes and Hardware



8331 - Medium-Duty Drag Race Brake Kit

11.75" x .35" solid-slotted rotor with 4-piston caliper and billet-aluminum hub with 3" studs - Fits '67-69 Camaro/Firebird, '64-72 Chevelle (A-Body), and '64-72 Chevy II/Nova. Fits most 15" wheels.



8332 - gStreet 11-3/4" Brake Kit

11.75" x .81" vented-slotted rotor with 4-piston caliper and billet-aluminum hub with 2" studs - Fits '67-69 Camaro/Firebird, '64-72 Chevelle (A-Body), and '64-72 Chevy II/Nova. Fits most 15" wheels.



8333 - gStreet 13" Brake Kit

13" x 1" vented, slotted and cross-drilled rotor with 4-piston radial-mount caliper and billet-aluminum hubs with 2" studs - Fits '67-69 Camaro/Firebird, '64-72 Chevelle (A-Body), and '64-72 Chevy II/Nova. Fits some 16" and most 17" wheels.

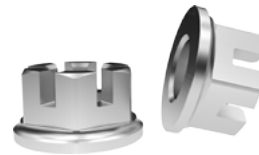


5711-34-20 - Spindle Nut Set

3/4"-20 castle nut, spindle washer, cotter pin; Set of 2- Fits most GM cars.

7964-5027 - Oversized Slotted Flange Nut

Optional 5/8-18 nut for use with Chassisworks 5705-XXX and 5733-XXX lower control arms with oversize balljoint studs (two required).



All prices subject to change. Current pricing available at www.cachassisworks.com.



Chris Alston's Chassisworks, Inc.
8661 Younger Creek Drive
Sacramento, CA 95828

Order: 800-722-2269
Tech: 916-388-0288
Fax: 916-388-0295

sales@cachassisworks.com
www.cachassisworks.com